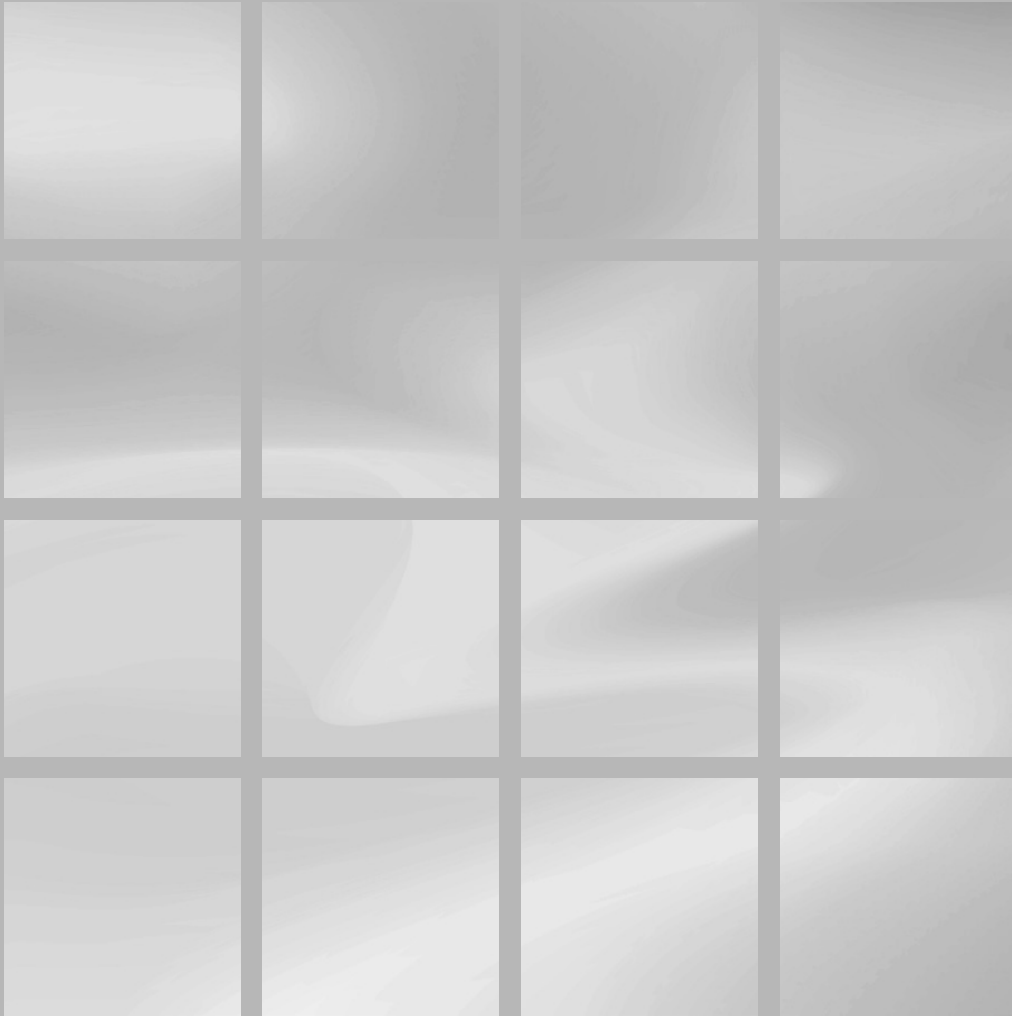


# ZUCCHETTI.

---



# ZUCCHETTI GROUP

IT

Alle spalle quasi un secolo di esperienza e all'orizzonte una nuova fase di sperimentazione: a un passo dal suo centesimo compleanno, il marchio Zucchetti rafforza la sua identità storica e istituzionale rinnovando e precisando i suoi percorsi progettuali e la sua immagine. Il neonato Zucchetti Group, all'interno del quale coesistono distinti ma complementari i brand Zucchetti e Kos, continuerà ad operare con decisione, carattere e qualità nel mondo del bagno, incrementando la diversità e la molteplicità dei linguaggi, accentuando la specificità dei due marchi e intraprendendo inedite collaborazioni con il mondo del design.

La storia di Zucchetti inizia nel lontano 1929 con la fondazione di una piccola fonderia a Valduggia (VC) ad opera di Alfredo Zucchetti ed arriva ad oggi con la costituzione di Zucchetti Group, guidato dalla terza generazione-Elena, Carlo, con i cugini Marco e Paolo Zucchetti. Il gruppo occupa un grande ed evoluto stabilimento produttivo, per un totale di circa 30.000 mq coperti, 200 dipendenti e 600.000 articoli prodotti ogni anno. Innovazione, design e qualità sono da sempre i pilastri fondanti dell'azienda, cardini imprescindibili dell'evoluzione della sua storia. Dopo una fase iniziale legata alla produzione di rubinetteria e valvole industriali, nel 1950 Zucchetti converte lo stabilimento interamente alla realizzazione di rubinetteria sanitaria cromata.

Nei primi anni Cinquanta entrano in azienda Mario e Luciano Zucchetti, figli di Alfredo. Mario presidente e imprenditore illuminato guiderà l'azienda per quasi cinquant'anni, verso un importante sviluppo produttivo, tecnologico e commerciale: ultimerà il nuovo grande stabilimento aziendale con sede a Gozzano (NO) caratterizzato da impianti produttivi all'avanguardia, esporrà il brand nelle più importanti fiere internazionali di settore, a Milano aprirà il primo ufficio export,

per la conquista dei mercati esteri impegnati nella ricostruzione post bellica. Nel 1958 arrivano le prime importanti commesse oltre oceano: Canada e Australia (fra altri paesi) divengono nuovi importanti mercati per l'azienda. Sono gli anni Settanta quando l'azienda inizia il proprio percorso nel mondo del design. Mario Zucchetti era infatti fortemente convinto dell'importanza del segno in ogni progetto, sintesi di innovative valenze tecniche ed estetiche. Per il primo miscelatore monocomando prodotto in Italia sceglie di collaborare con lo Studio Nizzoli.

Gli anni Ottanta vedono l'ingresso di Zucchetti nel mondo della comunicazione, sia in televisione che sulla carta stampata, con l'obiettivo di costruire un brand forte e conosciuto. Un iter che l'azienda non ha mai abbandonato perché consapevole dell'importanza di trasferire i propri valori e la propria eccellenza attraverso diversi canali.

Con il cambio di secolo il bagno diviene un ambiente di primo piano, capace di riflettere i cambiamenti della società e della cultura; il gusto si evolve come anche la sensibilità del consumatore ed il bagno diventa "la sala da bagno". Attenta al mutare degli aspetti sociologici e antropologici Zucchetti è tra i primi a credere e ad investire in progetti sempre più innovativi, intercettando le istanze di un pubblico che cerca esperienze desiderabili e non solo oggetti necessari.

Nel 2004 l'azienda decide di avvalersi della consulenza strategica di Ludovica+Roberto Palomba come nuovi art director del marchio, una efficace collaborazione durata 15 anni. Nel 2007 nasce il progetto per una proposta bagno completa a seguito dell'acquisizione di Kos, brand associato alla migliore produzione di vasche e complementi bagno di design.



Un mondo-bagno che trasla dal piano della funzione a quello della sensazione e della seduzione, dando vita ad una delle più interessanti ed eclettiche proposte progettuali nel settore.

Il 2019 segna una nuova svolta con la definizione di Zucchetti Group e la direzione artistica di Matteo Fiorini con Studio Lys. Il gruppo nasce per rappresentare istituzionalmente e congiungere i due marchi Zucchetti e Kos con l'intento preciso di esaltarne le specificità, spingendo sulla loro complementarietà e differenza.

**Modernissimo e forte.  
Oggi come fra vent'anni.**

**ZETAMIX**

**Una nuova estetica.  
Il design di Zetamix firmato Nizzoli.**  
Guardatelo! Zetamix ha una linea d'anguardia pura e funzionale perché noi della Zucchetti vogliamo che resti modernissimo anche fra vent'anni. Per questo abbiamo scelto uno dei più prestigiosi studi di design: Nizzoli Sistem di Milano. Zetamix è un rubinetto che sarà bello sempre perché il design, quando è veramente originale, sfida il tempo.

**Il segreto del nostro vantaggio: il cuore forte di Zetamix.** I due dischi di ceramica che ormai hanno sostituito le vecchie guarnizioni di gomma: nel rubinetto Zetamix sono praticamente indistruttibili perché costruiti con ceramica sintetizzata durissima in ossido di alluminio Ruotano e sitano uno sopra l'altro centinaia di migliaia di volte senza mai logorarsi, con un'aderenza così ermetica che a rubinetto chiuso non passa una sola goccia d'acqua. Ma non basta. La leva del comando di mescolazione di Zetamix è così piccola che può essere azionata da un dito solo. È questo cuore forte e dolce insieme che ha permesso a Zetamix di superare i più severi controlli europei di qualità.

**1975: Zetamix Zucchetti è il primo monocomando a dischi di ceramica realizzato in Italia.**

RUBINETTERIA  
**ZUCCHETTI**

EN

With nearly a century of experience behind them and a new experimental phase on the horizon: as the Zucchetti brand nears its 100th birthday, it strengthens its history and institutional identity by renewing and sharpening its design direction and image. Inside the new Zucchetti Group, the Zucchetti and Kos brands will be distinct

yet complementary—continuing to operate with decision, character and quality in the world of bathrooms and wellness, while increasing the diversity of languages and forming new collaborations with the design field.

Zucchetti's story first begins back in 1929, with a small foundry in Valduggia (Piedmont) set up by Alfredo Zucchetti. Today the Zucchetti Group is led by the third generation, Elena and Carlo, with cousins Marco and Paolo Zucchetti. The group holds a large and advanced production plant, covering a total surface of about 30,000 square metres, employing 200 people and manufacturing 600.000 articles every year.

The basic values of Zucchetti have always been innovation, design, and quality: the essential cornerstones that have guided the firm throughout its history. After an early phase manufacturing industrial valves and fittings, in 1950 the factory is converted to produce chrome sanitary taps. In the early 1950s the firm brings in Mario and Luciano Zucchetti, Alfredo's sons. Mario, president and enlightened entrepreneur goes on to lead the company for nearly fifty years. He steers the company towards, technological and commercial advancement and major production development: he completes the large new headquarters in Gozzano (Novara) which he equips with advanced manufacturing facilities, he exhibits the brand at the Milan trade fair and then, one by one, at all the other most important international trade fairs. Mario also opens the first Zucchetti export office, to conquer international markets engaged in the post-war re-construction. The first significant overseas contracts come in 1958: Canada and Australia (among the others) become important new markets for the firm.

The seventies see the company start its own path in the world of design. Mario Zucchetti strongly believed in the importance of the design image of any product, as a synthesis of innovative technical and aesthetic values. He decides to call in Studio Nizzoli for the first single-lever mixer produced in Italy.

In the eighties, Zucchetti enters the world of communication, both on television and in the press, with the aim of building a strong, recognised brand. The company has never abandoned this course because it is fully aware of the importance of conveying its values and excellence through several communication channels.

With the turn of the century, the bathroom moves centre-stage, reflecting changes in society and culture as taste evolves in line with consumer sensitivity and the bathroom becomes the "bathing room". Attentive to changing sociological and man-made aspects, Zucchetti is one of the first to believe in investments in increasingly

more innovative projects, meeting the demands of a public looking for desirable experiences rather than necessary objects. In 2004 the company decides to avail of the strategic consultancy services of Ludovica+Roberto Palomba, successful art directors of the brand for 15 years. 2007 sees the birth of the project for a complete bathroom proposal, following the acquisition of Kos, a brand associated with the best production of design bathtubs and bathroom complements. A bathroom- world that shifts from a merely functionality level to one of sensation and seduction, giving rise to one of the most interesting, eclectic design realities linked to the bathroom sector.

2019 marks a new turning point with the definition of Zucchetti Group and the art direction by Matteo Fiorini with Studio Lys. The group is formed to represent institutionally and join the two Zucchetti and Kos brands, with the precise intent to enhance its specificity, pushing their complementarity and difference.



rimentación en el horizonte, a un paso de su centenario, la marca Zucchetti refuerza su identidad histórica e institucional precisando y renovando sus procesos proyectuales y su imagen. El recién nacido Zucchetti Group, en el que coexisten las distintas y complementarias marcas Zucchetti y Kos, seguirá operando con decisión, carácter y calidad en el mundo del baño incrementando su diversidad y multiplicidad de lenguajes, acentuando la especificidad de las dos marcas y emprendiendo inéditas colaboraciones con el mundo del diseño.

La historia de Zucchetti comienza en el lejano 1929 con la fundación de una pequeña fundición en Valduggia (Vercelli, Italia) por parte de Alfredo Zucchetti y llega a nuestros días con la constitución de Zucchetti Group, dirigido por la tercera generación, Elena y Carlo, con la colaboración de sus primos Marco y Paolo Zucchetti. El grupo ocupa una planta de producción grande y avanzada, un total de 30 000 m<sup>2</sup> cubiertos, 200 empleados y 600 000 artículos fabricados cada año.

Innovación, diseño y calidad son desde siempre los pilares fundadores de la empresa, bases imprescindibles de la evolución de su historia. Tras una fase inicial relacionada con la producción de grifería y válvulas industriales, en 1950 Zucchetti transforma completamente su fábrica para realizar grifería sanitaria cromada.

En los primeros años de la década de los cincuenta entran en la empresa Mario y Luciano Zucchetti, hijos de Alfredo. Mario presidente y empresario iluminado guía la empresa durante casi cincuenta años hacia un importante desarrollo productivo, tecnológico y comercial: conclusión de la nueva gran fábrica empresarial con sede en Gozzano (Novara, Italia) caracterizada por sus instalaciones productivas de vanguardia; exposición de la marca en las principales ferias internacionales del sector y apertura en Milán del primer departamento de exportación para conquistar los mercados extranjeros ocupados en la reconstrucción posbélica. En el año 1958 llegan los primeros pedidos importantes de la otra parte del océano: Canadá y Australia (entre otros países) que se convierten en nuevos e importantes mercados para la empresa.

Durante la década de los setenta la empresa empieza su recorrido en el mundo del diseño. Mario Zucchetti estaba firmemente convencido de la importancia del signo estilístico en cada proyecto: síntesis de innovadores valores técnicos y estéticos. Para el primer mezclador monomando producido en Italia elige la colaboración con el estudio Nizzoli.

En los años ochenta Zucchetti entra también en el mundo de la comunicación, tanto en la televisión como en la prensa, con el



objetivo de construir una marca fuerte y conocida. Un proceso que la empresa no ha abandonado jamás, consciente de la importancia de transmitir sus valores y su excelencia a través de diversos canales.

Con el cambio de siglo, el baño pasa a ocupar un lugar de primer plano, capaz de reflejar los cambios de la sociedad y de la cultura; el gusto evoluciona, así como la sensibilidad del consumidor, y el baño se convierte en «la sala de baño». Atenta al cambio de los aspectos sociológicos y antropológicos, Zucchetti es una de las primeras marcas en creer e invertir en proyectos cada vez más innovadores, captando la demanda de un público que busca experiencias deseables, y no solo objetos necesarios. Por este motivo, en 2004 la empresa decide valerse del asesoramiento estratégico de Ludovica+ Roberto Palomba, como directores artísticos de la marca, colaboración de éxito durante 15 años. En 2007 nace el proyecto para una propuesta completa de baño, tras la adquisición de Kos, marca asociada a la mejor producción de bañeras y complementos de baño de alta gama. Un mundo-baño que se desplaza del plano de la función al de

la sensación y la seducción, dando origen a una de las más interesantes y eclécticas propuestas de proyecto en el sector.

El año 2019 marca un nuevo giro con la definición de Zucchetti Group y la nueva dirección artística de Matteo Fiorini con Studio Lys. El grupo nace para combinar y representar institucionalmente las dos marcas, Zucchetti y Kos, con la precisa intención de resaltar sus especificidades, potenciando su diversidad y complementariedad.



ITALIAN EXCELLENCE

ZUCCHETTI IS OFTEN REFERRED TO AS THE  
LAMBORGHINI OF BATHROOM FIXTURES.





# ZUCCHETTI.

## Zucchetti tapware finishes:

**Note:** Gill and Brim collections are only available in Chrome, Brushed Nickel (C3), Brushed Metal Black (C51) & Black (N6).

Zucchetti is available via selected distributors. Visit [ROBERTSON.CO.NZ](http://ROBERTSON.CO.NZ) or contact [DESIGNIDEAS@ROBERTSON.CO.NZ](mailto:DESIGNIDEAS@ROBERTSON.CO.NZ) for more information



Chrome



**C3** Brushed Nickel (Living Finish)



**C41** Brushed Gold (Living Finish)



**P31** Brushed British Gold



**P91** Brushed Copper



**P21** Brushed Chocolate



**C51** Brushed Metal Black (Living Finish)



**N6** Black



**N1** Matt Black



**W1** Matt White

C3, C41, C51 are uncoated 'Living Finishes' and change over time. They will take on a patina or oxidation effect (or both) and will change in different ways within different environments.



# PAN

---

Pan Basin Mixer  
Finish: Brushed Gold



Pan Goose Neck  
2TH Basin Mixer  
Finish: Chrome

“The Pan collection is our interpretation of the basic cylinder type single lever mixer, which begins with classic archetypes and goes on to develop completely original aesthetics and new types of taps. We focused our attention on the joint between the vertical and horizontal elements: as in nature there are no cuts and weldings, so that the spout and handle are derived from the body of our tap, through a soft connection, designed like the trunk of a tree, according to exactly the same smooth logic found in the graft between the trunk and the branch of a tree.”

**Ludovica + Roberto Palomba**



**ZUCCHETTI.**



Zucchetti is available via selected distributors. Visit [ROBERTSON.CO.NZ](https://www.robertson.co.nz)  
or contact [DESIGNIDEAS@ROBERTSON.CO.NZ](mailto:DESIGNIDEAS@ROBERTSON.CO.NZ) for more information



# PAN

## PAN BASIN MIXER

35MM CARTRIDGE  
MAINS PRESSURE:  
WELS 5 STAR 5 L/MIN

CHROME:  
ZP6242



BRUSHED  
NICKEL:  
ZP6242.C3



BRUSHED  
GOLD:  
ZP6242.C41



BRUSHED  
BRITISH GOLD:  
ZP6242.P31



BRUSHED  
COPPER:  
ZP6242.P91



BRUSHED  
CHOCOLATE:  
ZP6242.P21



BRUSHED  
METAL BLACK:  
ZP6242.C51



MATT  
BLACK:  
ZP6242.N1



MATT  
WHITE:  
ZP6242.W1



## PAN EXTENDED HEIGHT BASIN MIXER

35MM CARTRIDGE  
MAINS PRESSURE:  
WELS 5 STAR 5.5 L/MIN

CHROME:  
ZP6219



BRUSHED  
NICKEL:  
ZP6219.C3



BRUSHED  
GOLD:  
ZP6219.C41



BRUSHED  
BRITISH GOLD:  
ZP6219.P31



BRUSHED  
COPPER:  
ZP6219.P91



BRUSHED  
CHOCOLATE:  
ZP6219.P21



BRUSHED  
METAL BLACK:  
ZP6219.C51



MATT  
BLACK:  
ZP6219.N1



MATT  
WHITE:  
ZP6219.W1



## PAN GOOSE NECK 2TH BASIN MIXER

35MM CARTRIDGE  
MAINS PRESSURE:  
WELS 5 STAR 5 L/MIN

CHROME:  
ZP6224



BRUSHED  
NICKEL:  
ZP6224.C3



BRUSHED  
GOLD:  
ZP6224.C41



BRUSHED  
BRITISH GOLD:  
ZP6224.P31



BRUSHED  
COPPER:  
ZP6224.P91



BRUSHED  
CHOCOLATE:  
ZP6224.P21



BRUSHED  
METAL BLACK:  
ZP6224.C51



MATT  
BLACK:  
ZP6224.N1



MATT  
WHITE:  
ZP6224.W1



## PAN EXTENDED HEIGHT GOOSE NECK 2TH BASIN MIXER

35MM CARTRIDGE  
MAINS PRESSURE:  
WELS 5 STAR 5 L/MIN

CHROME:  
ZP6223



BRUSHED  
NICKEL:  
ZP6223.C3



BRUSHED  
GOLD:  
ZP6223.C41



BRUSHED  
BRITISH GOLD:  
ZP6223.P31



BRUSHED  
COPPER:  
ZP6223.P91



BRUSHED  
CHOCOLATE:  
ZP6223.P21



BRUSHED  
METAL BLACK:  
ZP6223.C51



MATT  
BLACK:  
ZP6223.N1



MATT  
WHITE:  
ZP6223.W1



Zucchetti is available via selected distributors. Visit [ROBERTSON.CO.NZ](https://www.robertson.co.nz)  
or contact [DESIGNIDEAS@ROBERTSON.CO.NZ](mailto:DESIGNIDEAS@ROBERTSON.CO.NZ) for more information

Pan Goose Neck  
2TH Basin Mixer  
Finish: Brushed Chocolate



C3, C41, C51 are uncoated 'Living Finishes' and change over time. They will take on a patina or oxidation effect (or both) and will change in different ways within different environments.

\*All guarantees are subject to terms  
and conditions and available at:  
[robertson.co.nz/warranties](https://www.robertson.co.nz/warranties)



PAN

---



Pan Wall Mounted Basin Mixer  
Finish: Brushed Nickel

Zucchetti is available via selected distributors. Visit [ROBERTSON.CO.NZ](https://www.robertson.co.nz)  
or contact [DESIGNIDEAS@ROBERTSON.CO.NZ](mailto:DESIGNIDEAS@ROBERTSON.CO.NZ) for more information

ZUCCHETTI.



Pan Bath Column  
Finish: Chrome



# PAN

## PAN WALL MOUNTED BASIN MIXER

35MM CARTRIDGE  
 MAINS PRESSURE:  
 WELS 5 STAR 6 L/MIN  
 ALSO REQUIRES  
 BUILT IN PART FOR  
 BASIN/SHOWER MIXER  
**R99499-1250**

175MM  
 CHROME:  
**ZP6030**



230MM  
 CHROME:  
**ZP6123**



## PAN WALL MOUNTED BASIN MIXER

35MM CARTRIDGE  
 MAINS PRESSURE:  
 WELS 5 STAR 5 L/MIN  
 ALSO REQUIRES  
 BUILT IN PART FOR  
 BASIN/SHOWER MIXER  
**R99815**

175MM  
 CHROME:  
**ZP6032**



230MM  
 CHROME:  
**ZP6124**





**PAN SHOWER MIXER**

35MM CARTRIDGE  
SMALL FLANGE  
Ø60 ROUND  
ALSO REQUIRES  
BUILT IN PART FOR  
BASIN/SHOWER MIXER  
R99499-1250



CHROME:  
ZP6647



BRUSHED  
NICKEL:  
ZP6647.C3



BRUSHED  
GOLD:  
ZP6647.C41



BRUSHED  
BRITISH GOLD:  
ZP6647.P31



BRUSHED  
COPPER:  
ZP6647.P91



BRUSHED  
CHOCOLATE:  
ZP6647.P21



BRUSHED  
METAL BLACK:  
ZP6647.C51



MATT  
BLACK:  
ZP6647.N1



MATT  
WHITE:  
ZP6647.W1



**PAN SHOWER MIXER**

35MM CARTRIDGE  
Ø120 ROUND  
ALSO REQUIRES  
BUILT IN PART FOR  
BASIN/SHOWER MIXER  
R99499-1250



CHROME:  
ZP6122



BRUSHED  
NICKEL:  
ZP6122.C3



BRUSHED  
GOLD:  
ZP6122.C41



BRUSHED  
BRITISH GOLD:  
ZP6122.P31



BRUSHED  
COPPER:  
ZP6122.P91



BRUSHED  
CHOCOLATE:  
ZP6122.P21



BRUSHED  
METAL BLACK:  
ZP6122.C51



MATT  
BLACK:  
ZP6122.N1



MATT  
WHITE:  
ZP6122.W1



**PAN SHOWER MIXER**

35MM CARTRIDGE  
80(W) X 80(H)MM SQUARE  
ALSO REQUIRES  
BUILT IN PART FOR  
BASIN/SHOWER MIXER  
R99499-1250



CHROME:  
ZP6126



BRUSHED  
NICKEL:  
ZP6126.C3



BRUSHED  
GOLD:  
ZP6126.C41



BRUSHED  
METAL BLACK:  
ZP6126.C51



MATT  
BLACK:  
ZP6126.N1



MATT  
WHITE:  
ZP6126.W1



**PAN DIVERTER MIXER**

35MM CARTRIDGE  
Ø140 ROUND  
ALSO REQUIRES  
BUILT IN PART FOR  
BASIN/SHOWER MIXER  
R99684-1250



CHROME:  
ZP6127



BRUSHED  
NICKEL:  
ZP6127.C3



BRUSHED  
GOLD:  
ZP6127.C41



BRUSHED  
BRITISH GOLD:  
ZP6127.P31



BRUSHED  
COPPER:  
ZP6127.P91



BRUSHED  
CHOCOLATE:  
ZP6127.P21



BRUSHED  
METAL BLACK:  
ZP6127.C51



MATT  
BLACK:  
ZP6127.N1



MATT  
WHITE:  
ZP6127.W1



**PAN DIVERTER MIXER**

35MM CARTRIDGE  
80(W) X 130(H)MM SQUARE  
ALSO REQUIRES  
BUILT IN PART FOR  
BASIN/SHOWER MIXER  
R99684-1250



CHROME:  
ZP6121



BRUSHED  
NICKEL:  
ZP6121.C3



BRUSHED  
GOLD:  
ZP6121.C41



BRUSHED  
METAL BLACK:  
ZP6121.C51



MATT  
BLACK:  
ZP6121.N1



MATT  
WHITE:  
ZP6121.W1



# PAN

## PAN BATH COLUMN

35MM CARTRIDGE  
 MAINS PRESSURE:  
 WELS 3 STAR 8 L/MIN

ALSO REQUIRES  
 BUILT IN PART -  
 FREESTANDING  
 BATH/BASIN MIXER  
 WITH DIVERTER  
**R99676**



CHROME:  
**ZP6622**



BRUSHED  
 NICKEL:  
**ZP6622.C3**



BRUSHED  
 GOLD:  
**ZP6622.C41**



BRUSHED  
 BRITISH GOLD:  
**ZP6622.P31**



BRUSHED  
 COPPER:  
**ZP6622.P91**



BRUSHED  
 CHOCOLATE:  
**ZP6622.P21**



BRUSHED  
 METAL BLACK:  
**ZP6622.C51**



MATT  
 BLACK:  
**ZP6622.N1**



MATT  
 WHITE:  
**ZP6622.W1**



## PAN FREESTANDING BATH SPOUT

ALSO REQUIRES  
 BUILT IN PART -  
 FREESTANDING  
 BATH SPOUT  
**R99672**



CHROME:  
**Z92059**



BRUSHED  
 NICKEL:  
**Z92059.C3**



BRUSHED  
 GOLD:  
**Z92059.C41**



BRUSHED  
 METAL BLACK:  
**Z92059.C51**



MATT  
 BLACK:  
**Z92059.N1**



MATT  
 WHITE:  
**Z92059.W1**



Zucchetti is available via selected distributors. Visit [ROBERTSON.CO.NZ](http://ROBERTSON.CO.NZ) or contact [DESIGNIDEAS@ROBERTSON.CO.NZ](mailto:DESIGNIDEAS@ROBERTSON.CO.NZ) for more information

**PAN ROUND BATH SPOUT**

160MM  
WALL MOUNTED  
MALE

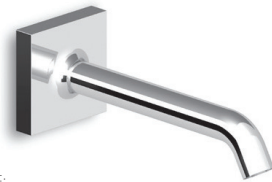


CHROME:  
Z92183



**PAN SQUARE BATH SPOUT**

160MM  
WALL MOUNTED  
MALE



CHROME:  
Z93731



**PAN 4TH BATH/SHOWER MIXER**

35MM CARTRIDGE  
MAINS:  
WELS 3 STAR 8 L/MIN

CHROME:  
ZP6502



C3, C41, C51 are uncoated 'Living Finishes' and change over time. They will take on a patina or oxidation effect (or both) and will change in different ways within different environments.

\*All guarantees are subject to terms and conditions and available at: [robertson.co.nz/warranties](http://robertson.co.nz/warranties)



# PAN

## PAN BIDET MIXER 35MM CARTRIDGE



CHROME:  
ZP6332

BRUSHED  
NICKEL:  
ZP6332.C3



BRUSHED  
GOLD:  
ZP6332.C41



BRUSHED  
BRITISH GOLD:  
ZP6332.P31



BRUSHED  
COPPER:  
ZP6332.P91



BRUSHED  
CHOCOLATE:  
ZP6332.P21



BRUSHED  
METAL BLACK:  
ZP6332.C51



MATT  
BLACK:  
ZP6332.N1



MATT  
WHITE:  
ZP6332.W1



Pan Thermostatic Mixer  
Finish: Chrome



**PAN THERMOSTATIC MIXER**

X1 OUTLET  
MAINS PRESSURE

ALSO REQUIRES  
BUILT IN PART -  
THERMOSTATIC  
SHOWER MIXER  
1 OUTLET  
**R97820**



CHROME:  
**ZT28659**



X1 OUTLET  
BRUSHED  
NICKEL:  
**ZT28659.C3**



X1 OUTLET  
BRUSHED  
GOLD:  
**ZT28659.C41**



X1 OUTLET  
BRUSHED  
METAL BLACK:  
**ZT28659.C51**



X1 OUTLET  
MATT  
BLACK:  
**ZT28659.N1**



X1 OUTLET  
MATT  
WHITE:  
**ZT28659.W1**



X2 OUTLET  
MAINS PRESSURE

ALSO REQUIRES  
BUILT IN PART -  
THERMOSTATIC  
SHOWER MIXER  
2 OUTLETS  
**R97821**



CHROME:  
**ZT28660**



X2 OUTLET  
BRUSHED  
NICKEL:  
**ZT28660.C3**



X2 OUTLET  
BRUSHED  
GOLD:  
**ZT28660.C41**



X2 OUTLET  
BRUSHED  
METAL BLACK:  
**ZT28660.C51**



X2 OUTLET  
MATT  
BLACK:  
**ZT28660.N1**



X2 OUTLET  
MATT  
WHITE:  
**ZT28660.W1**



X3 OUTLET  
MAINS PRESSURE

ALSO REQUIRES  
BUILT IN PART -  
THERMOSTATIC  
SHOWER MIXER  
3 OUTLETS  
**R97822**



CHROME:  
**ZT28661**



X3 OUTLET  
BRUSHED  
NICKEL:  
**ZT28661.C3**



X3 OUTLET  
BRUSHED  
GOLD:  
**ZT28661.C41**



X3 OUTLET  
BRUSHED  
METAL BLACK:  
**ZT28661.C51**



X3 OUTLET  
MATT  
BLACK:  
**ZT28661.N1**



X3 OUTLET  
MATT  
WHITE:  
**ZT28661.W1**



## GILL

---



Gill Bath Column  
Finish: Brushed Nickel

With its clean, essential design, Gill strikes the right balance between different interlocking cylindrical elements: the body, spout and lever are defined by varied circular sections with delicate, original curves.

The Gill line is composed of single lever mixers and other items that are characterised by their simplicity and adaptability, ideal for contract projects and bathrooms both large and small.

Zucchetti is available via selected distributors. Visit [ROBERTSON.CO.NZ](https://www.robertson.co.nz) or contact [DESIGNIDEAS@ROBERTSON.CO.NZ](mailto:DESIGNIDEAS@ROBERTSON.CO.NZ) for more information

**ZUCCHETTI.**



Gill Basin Mixer  
Finish: Brushed Metal Black



# GILL

## GILL BASIN MIXER

25MM CARTRIDGE  
MAINS PRESSURE:  
WELS 5 STAR 5.5 L/MIN



CHROME:  
ZGL707-1252



BRUSHED  
NICKEL:  
ZGL707-1252.C3



BRUSHED  
METAL BLACK:  
ZGL707-1252.C51



BLACK:  
ZGL707-1252.N6

## GILL EXTENDED HEIGHT BASIN MIXER

25MM CARTRIDGE  
MAINS PRESSURE:  
WELS 5 STAR 5.5 L/MIN



CHROME:  
ZGL709-1252



BRUSHED  
NICKEL:  
ZGL709-1252.C3



BRUSHED  
METAL BLACK:  
ZGL709-1252.C51



BLACK:  
ZGL709-1252.N6

## GILL BIDET MIXER

25MM CARTRIDGE



CHROME:  
ZGL386



BRUSHED  
NICKEL:  
ZGL386.C3



BRUSHED  
METAL BLACK:  
ZGL386.C51



BLACK:  
ZGL386.N6

## GILL WALL MOUNTED BASIN MIXER

35MM CARTRIDGE  
MAINS PRESSURE:  
WELS 5 STAR 5.5 L/MIN

ALSO REQUIRES  
BUILT IN PART FOR  
BASIN/SHOWER MIXER  
R99499-1250



175MM  
CHROME:  
ZGL677-1252



175MM  
BRUSHED  
NICKEL:  
ZGL677-1252.C3



175MM  
BRUSHED  
METAL BLACK:  
ZGL677-1252.C51



175MM  
BLACK:  
ZGL677-1252.N6



220MM  
CHROME:  
ZGL676



220MM  
BRUSHED  
NICKEL:  
ZGL676.C3



220MM  
BRUSHED  
METAL BLACK:  
ZGL676.C51



220MM  
BLACK:  
ZGL676.N6



Zucchetti is available via selected distributors. Visit [ROBERTSON.CO.NZ](http://ROBERTSON.CO.NZ) or contact [DESIGNIDEAS@ROBERTSON.CO.NZ](mailto:DESIGNIDEAS@ROBERTSON.CO.NZ) for more information

**GILL SHOWER MIXER**

35MM CARTRIDGE  
 Ø60 / SMALL FLANGE  
 MAINS PRESSURE  
 ALSO REQUIRES  
 BUILT IN PART FOR  
 BASIN/SHOWER MIXER  
**R99499-1250**



CHROME:  
**ZG8412-1252**



BRUSHED  
 NICKEL:  
**ZG8412-1252.C3**



BRUSHED  
 METAL BLACK:  
**ZG8412-1252.C51**

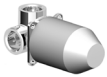


BLACK:  
**ZG8412-1252.N6**



**GILL SHOWER MIXER**

35MM CARTRIDGE  
 Ø120 / MAINS PRESSURE  
 ALSO REQUIRES  
 BUILT IN PART FOR  
 BASIN/SHOWER MIXER  
**R99499-1250**



CHROME:  
**ZGL122-1252**



BRUSHED  
 NICKEL:  
**ZGL122-1252.C3**



BRUSHED  
 METAL BLACK:  
**ZGL122-1252.C51**



BLACK:  
**ZGL122-1252.N6**



**GILL DIVERTER MIXER**

35MM CARTRIDGE  
 Ø140 / MAINS PRESSURE  
 ALSO REQUIRES  
 BUILT IN PART FOR  
 BASIN/SHOWER MIXER  
**R99684-1250**



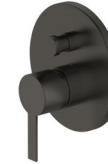
CHROME:  
**ZGL127-1252**



BRUSHED  
 NICKEL:  
**ZGL127-1252.C3**



BRUSHED  
 METAL BLACK:  
**ZGL127-1252.C51**



BLACK:  
**ZGL127-1252.N6**



**GILL BATH SPOUT**

WALL MOUNTED  
 MALE

175MM  
 CHROME:  
**Z92223**



175MM  
 BRUSHED  
 NICKEL:  
**Z92223.C3**



175MM BRUSHED  
 METAL BLACK:  
**Z92223.C51**



175MM BLACK:  
**Z92223.N6**



220MM  
 CHROME:  
**Z92224**



220MM  
 BRUSHED  
 NICKEL:  
**Z92224.C3**



220MM BRUSHED  
 METAL BLACK:  
**Z92224.C51**



220MM BLACK:  
**Z92224.N6**



**GILL BATH COLUMN**

35MM CARTRIDGE  
 MAINS PRESSURE:  
 WELS 3 STAR 8 L/MIN  
 ALSO REQUIRES BUILT  
 IN PART - FREESTANDING  
 BATH/BASIN MIXER  
 WITH DIVERTER  
**R99676**



CHROME:  
**ZGL622**



BRUSHED  
 NICKEL:  
**ZGL622.C3**



BRUSHED  
 METAL BLACK:  
**ZGL622.C51**



BLACK:  
**ZGL622.N6**



C3 and C51 are uncoated 'Living Finishes' and change over time. They will take on a patina or oxidation effect (or both) and will change in different ways within different environments.

\*All guarantees are subject to terms and conditions and available at: [robertson.co.nz/warranties](http://robertson.co.nz/warranties)



# BRIM

---

Brim Wall Mounted Basin Mixer  
Finish: Chrome



Brim Basin Mixer  
Finish: Brushed Nickel

“Brim is the result of research into shape that started a long time ago and of a follow-through that has teamed modernity and simplicity of geometrics. Brim is the synthesis and the sum of an industrial design project that began with the Soft mixer and has evolved according to ever-modern canons, managing to tune opposing geometrics to achieve perfect proportions.”

#### Ludovica + Roberto Palomba

Reassuring and essential, the Brim collection stands out for its compact design that uses a single lexicon to elaborate two different shapes: the circle and the square. The outcome of these efforts is a complete series of single-lever mixers with harmonious proportions and delicately rounded lines.



reddot award

2019 Red Dot Product Award / Germany



GOOD  
DESIGN

2019 Good Design Award / USA

Zucchetti is available via selected distributors. Visit [ROBERTSON.CO.NZ](http://ROBERTSON.CO.NZ)  
or contact [DESIGNIDEAS@ROBERTSON.CO.NZ](mailto:DESIGNIDEAS@ROBERTSON.CO.NZ) for more information

ZUCCHETTI.





# BRIM

## BRIM BASIN MIXER

25MM CARTRIDGE  
MAINS PRESSURE:  
WELS 5 STAR 5 L/MIN



CHROME:  
ZBR381-1250



BRUSHED  
NICKEL:  
ZBR381-1250.C3



BRUSHED  
METAL BLACK:  
ZBR381-1250.C51



BLACK:  
ZBR381-1250.N6

## BRIM EXTENDED HEIGHT BASIN MIXER

25MM CARTRIDGE  
MAINS PRESSURE:  
WELS 5 STAR 5 L/MIN



CHROME:  
ZBR382-1250



BRUSHED  
NICKEL:  
ZBR382-1250.C3



BRUSHED  
METAL BLACK:  
ZBR382-1250.C51



BLACK:  
ZBR382-1250.N6

## BRIM BIDET MIXER

25MM CARTRIDGE



CHROME:  
ZBR384



BRUSHED  
NICKEL:  
ZBR384.C3



BRUSHED  
METAL BLACK:  
ZBR384.C51



BLACK:  
ZBR384.N6

## BRIM WALL MOUNTED BASIN MIXER

35MM CARTRIDGE  
MAINS PRESSURE:  
WELS 5 STAR 5.5 L/MIN

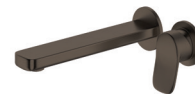
ALSO REQUIRES BUILT  
IN PART FOR  
BASIN/SHOWER  
MIXER R99499-1250



180MM  
CHROME:  
ZBR675-1250



180MM BRUSHED  
NICKEL:  
ZBR675-1250.C3



180MM BRUSHED  
METAL BLACK:  
ZBR675-1250.C51



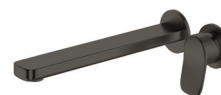
180MM  
BLACK:  
ZBR675-1250.N6



225MM  
CHROME:  
ZBR674



225MM BRUSHED  
NICKEL:  
ZBR674.C3



225MM BRUSHED  
METAL BLACK:  
ZBR674.C51



225MM  
BLACK:  
ZBR674.N6



reddot award



GOOD  
DESIGN

ZUCCHETTI.

15 Year Cartridge Guarantee\*  
10 Year Product Guarantee\*

5 Year Coloured Finish Guarantee  
(Excludes Living Finishes)\*  
Designed by Ludovica + Roberto Palomba

Mains Pressure  
Made in Italy

Zucchetti is available via selected distributors. Visit [ROBERTSON.CO.NZ](http://ROBERTSON.CO.NZ) or contact [DESIGNIDEAS@ROBERTSON.CO.NZ](mailto:DESIGNIDEAS@ROBERTSON.CO.NZ) for more information

**BRIM SHOWER MIXER**

35MM CARTRIDGE  
 Ø60 / SMALL FLANGE  
 MAINS PRESSURE  
 ALSO REQUIRES BUILT IN PART FOR BASIN/SHOWER MIXER **R99499-1250**



CHROME:  
**ZB8412-1250**



BRUSHED NICKEL:  
**ZB8412-1250.C3**



BRUSHED METAL BLACK:  
**ZB8412-1250.C51**



BLACK:  
**ZB8412-1250.N6**



**BRIM SHOWER MIXER**

35MM CARTRIDGE  
 Ø120 / MAINS PRESSURE  
 ALSO REQUIRES BUILT IN PART FOR BASIN/SHOWER MIXER **R99499-1250**



CHROME:  
**ZBR122-1250**



BRUSHED NICKEL:  
**ZBR122-1250.C3**



BRUSHED METAL BLACK:  
**ZBR122-1250.C51**



BLACK:  
**ZBR122-1250.N6**



**BRIM DIVERTER MIXER**

35MM CARTRIDGE  
 Ø140 / MAINS PRESSURE  
 ALSO REQUIRES BUILT IN PART FOR BASIN/SHOWER MIXER **R99684-1250**



CHROME:  
**ZBR127-1250**



BRUSHED NICKEL:  
**ZBR127-1250.C3**



BRUSHED METAL BLACK:  
**ZBR127-1250.C51**



BLACK:  
**ZBR127-1250.N6**



**BRIM BATH SPOUT**

WALL MOUNTED  
 MALE

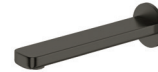
180MM CHROME:  
**Z92221**



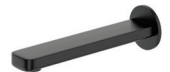
180MM BRUSHED NICKEL:  
**Z92221.C3**



180MM BRUSHED METAL BLACK:  
**Z92221.C51**



180MM BLACK:  
**Z92221.N6**



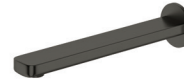
225MM CHROME:  
**Z92222**



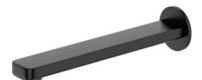
225MM BRUSHED NICKEL:  
**Z92222.C3**



225MM BRUSHED METAL BLACK:  
**Z92222.C51**



225MM BLACK:  
**Z92222.N6**



**BRIM BATH COLUMN**

35MM CARTRIDGE  
 MAINS PRESSURE:  
 WELS 3 STAR 8 L/MIN  
 ALSO REQUIRES BUILT IN PART - FREESTANDING BATH/BASIN MIXER WITH DIVERTER **R99676**



CHROME:  
**ZBR622**



BRUSHED NICKEL:  
**ZBR622.C3**



BRUSHED METAL BLACK:  
**ZBR622.C51**



BLACK:  
**ZBR622.N6**



C3 and C51 are uncoated 'Living Finishes' and change over time. They will take on a patina or oxidation effect (or both) and will change in different ways within different environments.

\*All guarantees are subject to terms and conditions and available at: [robertson.co.nz/warranties](http://robertson.co.nz/warranties)



PAN

---



Zucchetti Slide Shower  
Finish: Brushed Metal Black

ZUCCHETTI.



Zucchetti Slide Shower  
Pan Divertor Mixer  
Finish: Chrome



# PAN

## ZUCCHETTI SLIDE SHOWER

C/W 3 FUNCTION HAND PIECE  
 MAINS PRESSURE:  
 WELS O STAR 9 L/MIN

NOTE: P31, P91 &  
 P21 FINISHES COME  
 WITH A 1 FUNCTION  
 HAND PIECE

ALSO REQUIRES  
 WALL ELBOW

CHROME:  
**Z95181**



BRUSHED  
 NICKEL:  
**Z95181.C3**



BRUSHED  
 GOLD:  
**Z95181.C41**



BRUSHED  
 BRITISH GOLD:  
**Z95182.P31**



BRUSHED  
 COPPER:  
**Z95182.P91**



BRUSHED  
 CHOCOLATE:  
**Z95182.P21**



BRUSHED  
 METAL BLACK:  
**Z95181.C51**



MATT  
 BLACK:  
**Z95181.N1**



MATT  
 WHITE:  
**Z95181.W1**



## ZUCCHETTI WALL ELBOW

CHROME:  
**Z93924**



BRUSHED  
 NICKEL:  
**Z93924.C3**



BRUSHED  
 GOLD:  
**Z93924.C41**



BRUSHED  
 BRITISH GOLD:  
**Z93924.P31**



BRUSHED  
 COPPER:  
**Z93924.P91**



BRUSHED  
 CHOCOLATE:  
**Z93924.P21**



BRUSHED  
 METAL BLACK:  
**Z93924.C51**



MATT  
 BLACK:  
**Z93924.N1**



MATT  
 WHITE:  
**Z93924.W1**





Zucchetti is available via selected distributors. Visit [ROBERTSON.CO.NZ](http://ROBERTSON.CO.NZ) or contact [DESIGNIDEAS@ROBERTSON.CO.NZ](mailto:DESIGNIDEAS@ROBERTSON.CO.NZ) for more information

**ZUCCHETTI 300 SHOWERHEAD**

Ø300  
MAINS PRESSURE:  
WELS 0 STAR 9 L/MIN



CHROME:  
Z94266

BRUSHED  
NICKEL:  
Z94266.C3



BRUSHED  
GOLD:  
Z94266.C41



BRUSHED  
BRITISH GOLD:  
Z94266.P31



BRUSHED  
COPPER:  
Z94266.P91



BRUSHED  
CHOCOLATE:  
Z94266.P21



BRUSHED  
METAL BLACK:  
Z94266.C51



MATT  
BLACK:  
Z94266.N1



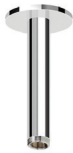
MATT  
WHITE:  
Z94266.W1



**ZUCCHETTI CEILING  
SHOWER ARM**

130MM

CHROME:  
Z93026



BRUSHED  
NICKEL:  
Z93026.C3



BRUSHED  
GOLD:  
Z93026.C41



BRUSHED  
BRITISH GOLD:  
Z93026.P31



BRUSHED  
COPPER:  
Z93026.P91



BRUSHED  
CHOCOLATE:  
Z93026.P21



BRUSHED  
METAL BLACK:  
Z93026.C51



MATT  
BLACK:  
Z93026.N1



MATT  
WHITE:  
Z93026.W1



**ZUCCHETTI CEILING  
SHOWER ARM**

300MM

CHROME:  
Z93024



BRUSHED  
NICKEL:  
Z93024.C3



BRUSHED  
GOLD:  
Z93024.C41



BRUSHED  
BRITISH GOLD:  
Z93024.P31



BRUSHED  
COPPER:  
Z93024.P91



BRUSHED  
CHOCOLATE:  
Z93024.P21



BRUSHED  
METAL BLACK:  
Z93024.C51



MATT  
BLACK:  
Z93024.N1



MATT  
WHITE:  
Z93024.W1



**ZUCCHETTI WALL  
SHOWER ARM**

350MM

CHROME:  
Z93027



BRUSHED  
NICKEL:  
Z93027.C3



BRUSHED  
GOLD:  
Z93027.C41



BRUSHED  
BRITISH GOLD:  
Z93027.P31



BRUSHED  
COPPER:  
Z93027.P91



BRUSHED  
CHOCOLATE:  
Z93027.P21



BRUSHED  
METAL BLACK:  
Z93027.C51



MATT  
BLACK:  
Z93027.N1



MATT  
WHITE:  
Z93027.W1



C3, C41 & C51 are uncoated 'Living Finishes' and change over time. They will take on a patina or oxidation effect (or both) and will change in different ways within different environments.

\*All guarantees are subject to terms and conditions and available at: [robertson.co.nz/warranties](http://robertson.co.nz/warranties)



# PAN

Zucchetti is available via selected distributors. Visit [ROBERTSON.CO.NZ](http://ROBERTSON.CO.NZ) or contact [DESIGNIDEAS@ROBERTSON.CO.NZ](mailto:DESIGNIDEAS@ROBERTSON.CO.NZ) for more information

## PAN ROBE HOOK



CHROME:  
ZAC650



## PAN DOUBLE ROBE HOOK



CHROME:  
ZAC651



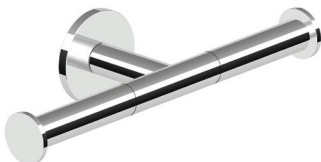
## PAN TOILET ROLL HOLDER



CHROME:  
ZAC630



## PAN DOUBLE TOILET ROLL HOLDER



CHROME:  
ZAC631



**PAN TOWEL RING**



CHROME:  
ZAC625

BRUSHED  
NICKEL:  
ZAC625.C3



BRUSHED  
GOLD:  
ZAC625.C41



BRUSHED  
METAL BLACK:  
ZAC625.C51



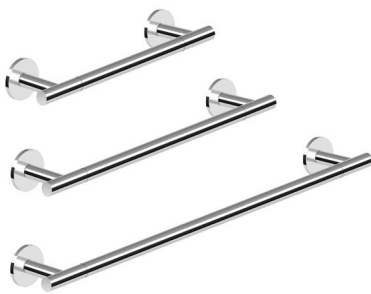
MATT  
BLACK:  
ZAC625.N1



MATT  
WHITE:  
ZAC625.W1



**PAN TOWEL RAIL**



CHROME  
300MM: ZAC620  
450MM: ZAC621  
600MM: ZAC622

BRUSHED  
NICKEL:  
300MM: ZAC620.C3  
450MM: ZAC621.C3  
600MM: ZAC622.C3



BRUSHED  
GOLD:  
300MM: ZAC620.C41  
450MM: ZAC621.C41  
600MM: ZAC622.C41



BRUSHED  
BRITISH GOLD:  
450MM: ZAC621.P31



BRUSHED  
COPPER:  
450MM: ZAC621.P91



BRUSHED  
CHOCOLATE:  
450MM: ZAC621.P21



BRUSHED  
METAL BLACK:  
300MM: ZAC620.C51  
450MM: ZAC621.C51  
600MM: ZAC622.C51



MATT  
BLACK:  
300MM: ZAC620.N1  
450MM: ZAC621.N1  
600MM: ZAC622.N1



MATT  
WHITE:  
300MM: ZAC620.W1  
450MM: ZAC621.W1  
600MM: ZAC622.W1



**PAN FREESTANDING  
TOILET BRUSH**



CHROME:  
ZAD555

BRUSHED  
NICKEL:  
ZAD555.C3



BRUSHED  
GOLD:  
ZAD555.C41



BRUSHED  
BRITISH GOLD:  
ZAD555.P31



BRUSHED  
COPPER:  
ZAD555.P91



BRUSHED  
CHOCOLATE:  
ZAD555.P21



BRUSHED  
METAL BLACK:  
ZAD555.C51



MATT  
BLACK:  
ZAD555.N1



MATT  
WHITE:  
ZAD555.W1



**PAN WALL MOUNTED  
TOILET BRUSH**



CHROME:  
ZAD556

BRUSHED  
NICKEL:  
ZAD556.C3



BRUSHED  
GOLD:  
ZAD556.C41



BRUSHED  
METAL BLACK:  
ZAD556.C51



MATT  
BLACK:  
ZAD556.N1



MATT  
WHITE:  
ZAD556.W1



C3, C41 and C51 are uncoated 'Living Finishes' and change over time. They will take on a patina or oxidation effect (or both) and will change in different ways within different environments.

\*All guarantees are subject to terms and conditions and available at: [robertson.co.nz/warranties](http://robertson.co.nz/warranties)



# PAN

---

## PAN WALL SOAP DISH

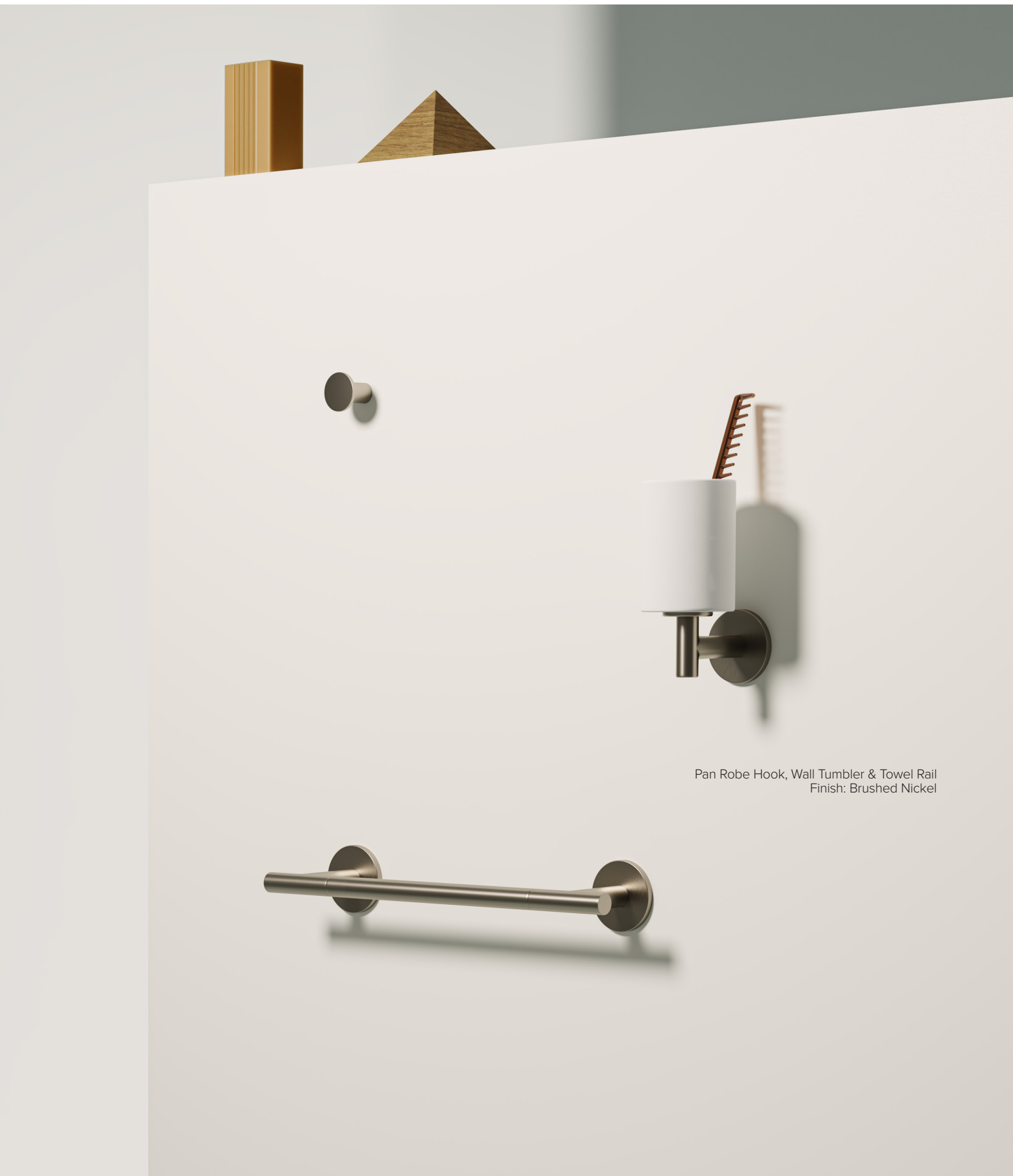


## PAN WALL TUMBLER



## PAN WALL SOAP DISPENSER





Pan Robe Hook, Wall Tumbler & Towel Rail  
Finish: Brushed Nickel

C3, C41 and C51 are uncoated 'Living Finishes' and change over time. They will take on a patina or oxidation effect (or both) and will change in different ways within different environments.

\*All guarantees are subject to terms and conditions and available at:  
[robertson.co.nz/warranties](http://robertson.co.nz/warranties)



# KITCHEN MIXERS

Zucchetti is available via selected distributors. Visit [ROBERTSON.CO.NZ](http://ROBERTSON.CO.NZ) or contact [DESIGNIDEAS@ROBERTSON.CO.NZ](mailto:DESIGNIDEAS@ROBERTSON.CO.NZ) for more information

## PAN GOOSE NECK KITCHEN MIXER WITH SWIVEL SPOUT

35MM CARTRIDGE  
MAINS PRESSURE:  
WELS 4 STAR 7.5 L/MIN

CHROME:  
ZP6284



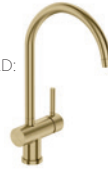
BRUSHED NICKEL:  
ZP6284.C3



BRUSHED GOLD:  
ZP6284.C41



BRUSHED BRITISH GOLD:  
ZP6284.P31



BRUSHED COPPER:  
ZP6284.P91



BRUSHED CHOCOLATE:  
ZP6284.P21



BRUSHED METAL BLACK:  
ZP6284.C51



MATT BLACK:  
ZP6284.N1



MATT WHITE:  
ZP6284.W1



## PAN GOOSE NECK KITCHEN MIXER WITH SWIVEL SPOUT AND PULL OUT SPRAY

35MM CARTRIDGE  
MAINS PRESSURE:  
WELS 5 STAR 5 L/MIN

CHROME:  
ZP6285



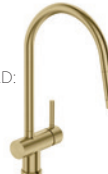
BRUSHED NICKEL:  
ZP6285.C3



BRUSHED GOLD:  
ZP6285.C41



BRUSHED BRITISH GOLD:  
ZP6285.P31



BRUSHED COPPER:  
ZP6285.P91



BRUSHED CHOCOLATE:  
ZP6285.P21



BRUSHED METAL BLACK:  
ZP6285.C51



MATT BLACK:  
ZP6285.N1



MATT WHITE:  
ZP6285.W1



Pan Goose Neck Kitchen Mixer  
Finish: Matt Black

Pan Goose Neck Kitchen Mixer  
Finish: Chrome



C3, C41 and C51 are uncoated 'Living Finishes' and change over time. They will take on a patina or oxidation effect (or both) and will change in different ways within different environments.

\*All guarantees are subject to terms and conditions and available at:  
[robertson.co.nz/warranties](http://robertson.co.nz/warranties)



Zucchetti is available via selected distributors. Visit [ROBERTSON.CO.NZ](http://ROBERTSON.CO.NZ) or contact [DESIGNIDEAS@ROBERTSON.CO.NZ](mailto:DESIGNIDEAS@ROBERTSON.CO.NZ) for more information

ZUCCHETTI

**32MM CLICKER WASTE  
- WITH OR WITHOUT OVERFLOW**

CHROME:  
R97755



BRUSHED  
NICKEL:  
R97755.C3



BRUSHED  
GOLD:  
R97755.C41



BRUSHED  
BRITISH GOLD:  
R97755.P31



BRUSHED  
COPPER:  
R97755.P91



BRUSHED  
CHOCOLATE:  
R97755.P21



BRUSHED  
METAL BLACK:  
R97755.C51



MATT  
BLACK:  
R97755.N1



MATT  
WHITE:  
R97755.W1



ZUCCHETTI

**32MM BOTTLE TRAP**

CHROME:  
Z9502P



BRUSHED  
NICKEL:  
Z9502P.C3



BRUSHED  
GOLD:  
Z9502P.C41



BRUSHED  
BRITISH GOLD:  
Z9502P.P31



BRUSHED  
COPPER:  
Z9502P.P91



BRUSHED  
CHOCOLATE:  
Z9502P.P21



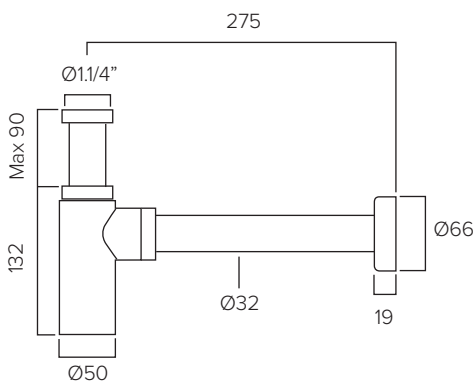
BRUSHED  
METAL BLACK:  
Z9502P.C51



MATT  
BLACK:  
Z9502P.N1



MATT  
WHITE:  
Z9502P.W1



**ZUCCHETTI.**

1 Year Guarantee\*  
Made in Italy

\*All guarantees are subject to terms and conditions and available at: [robertson.co.nz/warranties](http://robertson.co.nz/warranties)







25 Vestey Drive  
Mt Wellington, Auckland 1060

PO Box 14695, Panmure  
Auckland 1741, New Zealand

Ph: +64 9 573 0490  
Fax: +64 9 573 0495  
Email: sales@robertson.co.nz

**ROBERTSON.CO.NZ**



You can view and purchase our products nationwide from our supporting bathroom suppliers. To find your nearest location visit **ROBERTSON.CO.NZ** and click on the 'where to buy' link at the top of the page. Alternatively you can view products at our Robertson Bathware Showrooms at the locations below.

## SHOWROOMS

# A

### AUCKLAND

#### ROBERTSON

25 Vestey Drive, Mt Wellington  
Ph: (09) 573 0490

Open Monday to Friday 8.00am - 4.30pm  
Open Saturday 9.00am - 2.00pm  
Closed Sunday and public holidays

#### KITCHEN THINGS | LUXURY COLLECTION

26 Morrow Street, Newmarket  
Ph: (09) 522 8375

Open 7 days 10am - 6pm

# W

### WELLINGTON

#### ROBERTSON

23 Marion St, Te Aro  
Ph: (04) 595 1165

Open Monday to Friday 8.30am - 5pm  
Closed Saturday and Sunday

# C

### CHRISTCHURCH

#### HOME IDEAS

37 Mandeville Street Riccarton  
Ph: (03) 348 2863

Open Monday to Friday 9am - 4pm  
Saturday 10am - 2pm Sunday 10am - 2pm

robertson  
**design.ideas™**

#### ROBERTSON DESIGN IDEAS

Email: designideas@robertson.co.nz

**ROBERTSONDESIGNIDEAS.CO.NZ**



robertson®  
**trade**

#### ROBERTSON TRADE PARTS & SERVICE CENTRE

42 Vestey Drive  
Mt Wellington, Auckland 1060  
Email: trade@robertson.co.nz

**ROBERTSONTRADE.CO.NZ**



#### ROBERTSON OUTLET STORE

42 Vestey Drive  
Mt Wellington, Auckland 1060  
Email: outlet@robertson.co.nz  
By appointment only

[www.trademe.co.nz/stores/robertson-bathware-outlet-store](http://www.trademe.co.nz/stores/robertson-bathware-outlet-store)